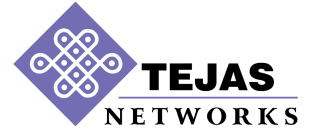
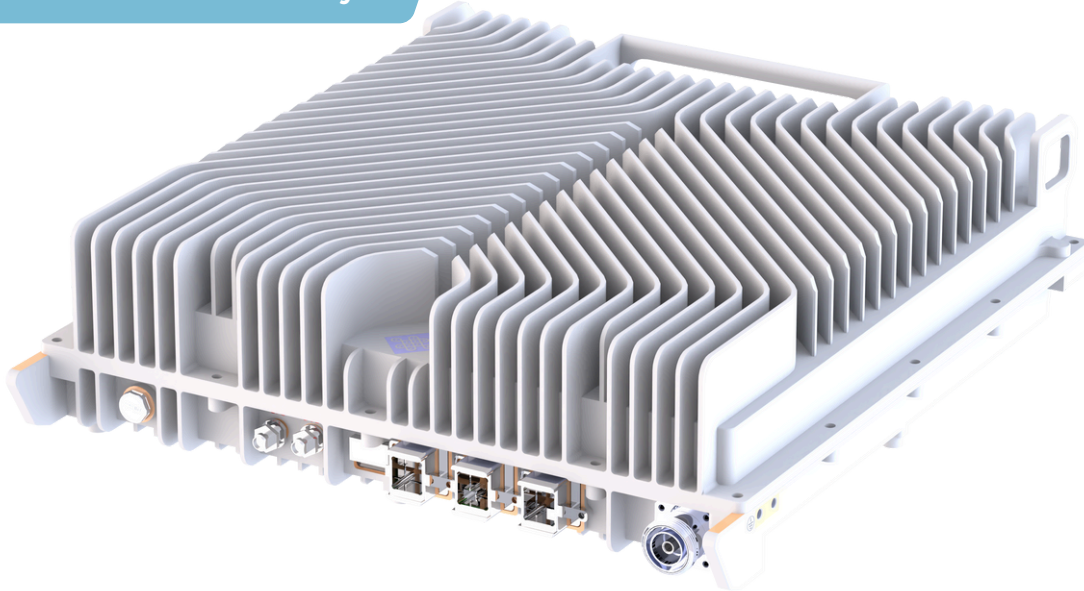


# Broadcast Radio Head (BRH)



Industry's First Standard-Compliant  
Low-Power BRH  
Redefining Next-Gen Content Delivery



**Tejas Broadcast Radio Head (BRH)** enables scalable network topology for delivering Next-Gen Digital Terrestrial Transmission (DTT).








## *Supported Deployment Scenarios:*

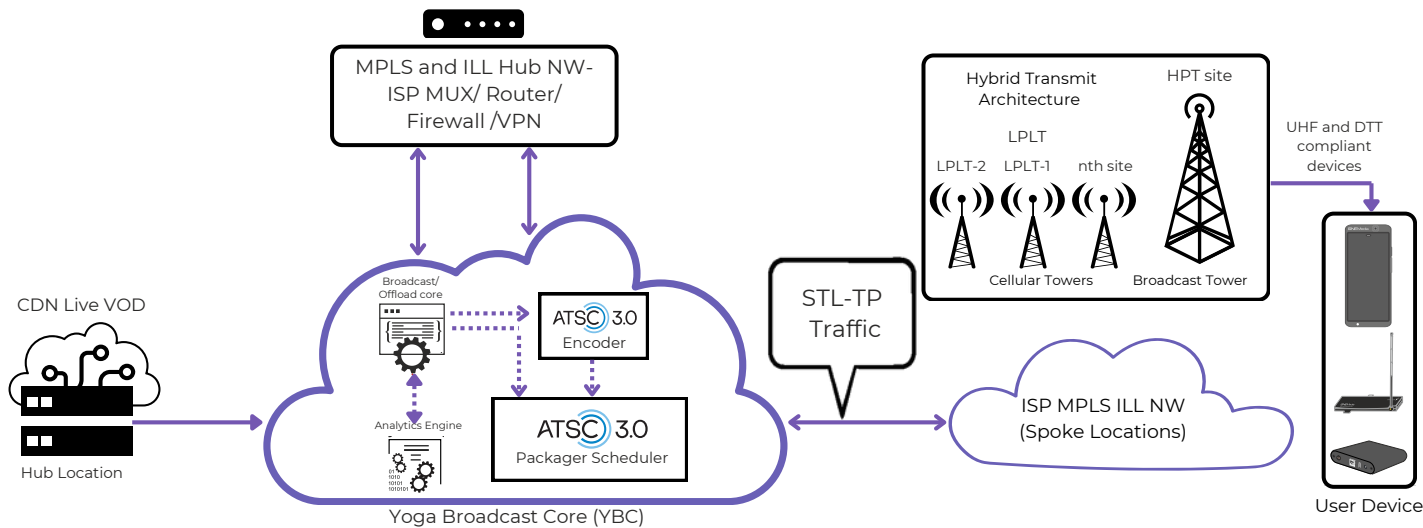
1. Gap-filler
2. SFN with High Power TV Transmitter or Low Power TV Transmitter
3. MFN
4. D2M - Direct To Mobile (Low Power Low Tower)

- Easy to install on a pole or on a telecom tower.
- Cooling by natural convection.
- Remote Management System with FCAPS capability.
- Remote Software Upgrade Management.

BRH can be deployed as part of the Direct to Mobile (D2M) Broadcast solution. This solution reduces congestion in the mobile network by offloading high viewership congestion causing content from cellular networks to a hybrid broadcast network.

## Use Cases

-  Live & OTT Content Broadcast
-  CDN Offload
-  Personalized Ads based on user viewing history & preferences
-  Remote Education without broadband
-  Broadcast Positioning System(BPS): Terrestrial backup to GPS for Positioning Navigation & Timing
-  Emergency Alerts & Notifications
-  Sensing/Distributed Radar like applications



## Technical Specifications

Broadcast Standards	ATSC 3.0 ATSC 1.0, ISDB-T, FeMBMS and DVB T2 (on Request)
Broadcast Specification	
Bandwidth	6 MHz, 7 MHz, 8 MHz
Maximum Conducted Power	40 W
Data Rate	6 MHz - Up to 25 Mbps; 8 MHz Up to 33 Mbps
MER	> 36 dB
Interface	
Backhaul	Ethernet 1 Gbps RJ45, Satellite (DVBS/DVB-S2)
	Fiber Optic Ethernet (SFP 1 Gbps)
RF	UHF Frequency Band 470-608 MHz
Device Management	
EMS	Centralized with Remote Software Upgradability
Reporting	System usage statistics reporting
Software Upgrades	Remote and scheduled software upgrades
Compliance	
Regulatory Compliance	FCC Title 47CFR 74.794 and Part 15
Mask Filter	Simple mask, full mask
Physical Specifications	
Dimensions (in mm) L x W x D	401 x 411 x 117
Weight	16.5 kg
Power Consumption	270 W
Power Input	-48 V DC
Model No.	TJBRH40W



**HQ: Bangalore, India**

New Delhi | Gurgaon | Mumbai | Kolkata | Chennai

[www.tejasnetworks.com](http://www.tejasnetworks.com) | +91-80-4179-4600

[info@tejasnetworks.com](mailto:info@tejasnetworks.com)

USA	UAE
UK	MALAYSIA
KENYA	SINGAPORE
SOUTH AFRICA	MEXICO
NIGERIA	BANGLADESH
ALGERIA	